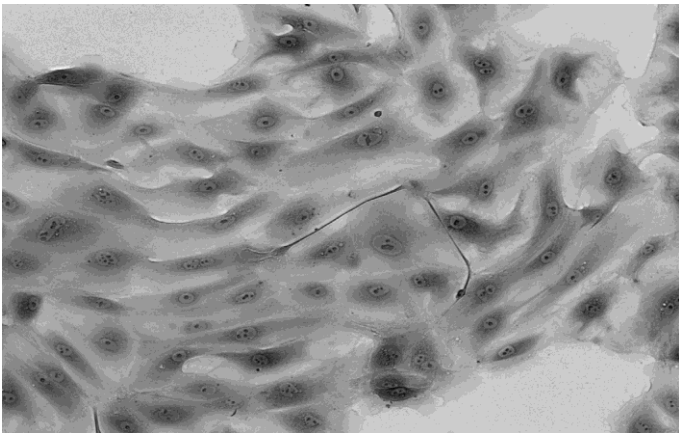




## Novabiosis Cryopreserved Primary Human Intestinal Epithelial Cells

Primary Human Intestinal Epithelial Cells are isolated from the ascending colon, descending colon, transverse colon, duodenum, and jejunum. The cell composition consists of a homogenous population of epithelial cells and are characterized by viability, morphology, plating efficiency along with cell characterization by staining for CK8 and CK18. In addition, each lot will be tested for its ability to maintain function for a minimum period of 5-7 days and will be reported on the quality control report delivered with each vial. Novabiosis primary human intestinal epithelial cells are for research use only and not approved for human or animal use, nor for in-vitro diagnostic testing.



### Applications

- Digestion and Retention of Nutrients
- Gene and Protein Expression
- Co-culture with mucosal cells
- Laboratory research use only.

### Donor Info Includes:

Donor age, sex, race, diabetic status, smoking history, alcohol use, and co-morbidities.

### Serology results include

HIV, Hepatitis B, Hepatitis C, CMV, EBV, HBV, HCV, HIV-1, HIV-2. Potentially HLTV-1 and HLTV-2 (if performed), bacteria, yeast.

### Cell Performance Testing:

Viability, cells per vial, Coverage by Crystal Violet at day 7, positive for Cytokeratin 8 +18 immunostaining.

### Advantages

- Investigation of several GI diseases, such as inflammatory bowel disease (IBD), colon and gastric cancer.
- Our intestinal epithelial cells can be used to study disease mechanism, drug compounds, and modulators from various regions of the intestine.
- Using Novabiosis Intestinal Epithelial cell media, the epithelial cells can be maintained for as long as 5-7 to use to study gene expression, metabolism, and drug absorption.

## Product Warranty

### ***CULTURES HAVE A LIMITED LIFESPAN IN VITRO***

Novabiosis guarantees the performance of its cells only if following Novabiosis specific use instructions exclusively, and the recommended protocols are followed. The performance of the cells are not guaranteed if any modifications are made. Cryopreserved primary human intestinal cells are assured to be viable and functional when thawed and maintained properly.

### **THESE PRODUCTS ARE FOR RESEARCH USE ONLY**

Not approved for human or veterinary use, for application to human, or for use in clinical or in-vivo procedures.

## Order Info

Item	Product Name	Quantity	Shipped
4051	Human Intestinal Epithelial Cells <b>Ascending Colon</b> (NhIECAC-P5)	>800,000 cells/vial	Cryopreserved
4063	Human Intestinal Epithelial Cells <b>Descending Colon</b> (NhIECDC-P6)	>800,000 cells/vial	Cryopreserved
4044	Human Intestinal Epithelial Cells <b>Duodenum</b> (NhIECD-P4)	>800,000 cells/vial	Cryopreserved
4063	Human Intestinal Epithelial Cells <b>Transverse Colon</b> (NhIECTC-P6)	>800,000 cells/vial	Cryopreserved
4064	Human Intestinal Epithelial Cells <b>Jejunum</b> (NhIECJ-P10)	>500,000 cells/vial	Cryopreserved
4101	Novabiosis Intestinal Epithelial Cell Medium (IEC)	125 mL	Wet Ice